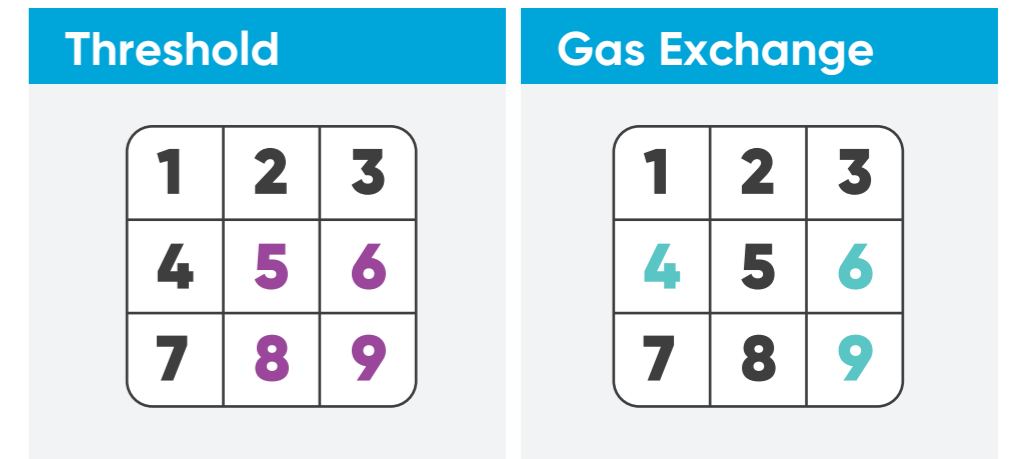
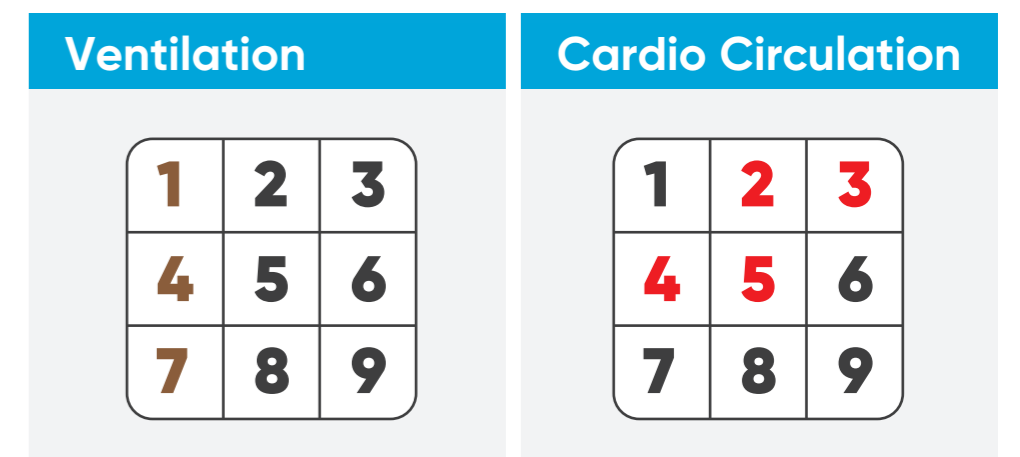
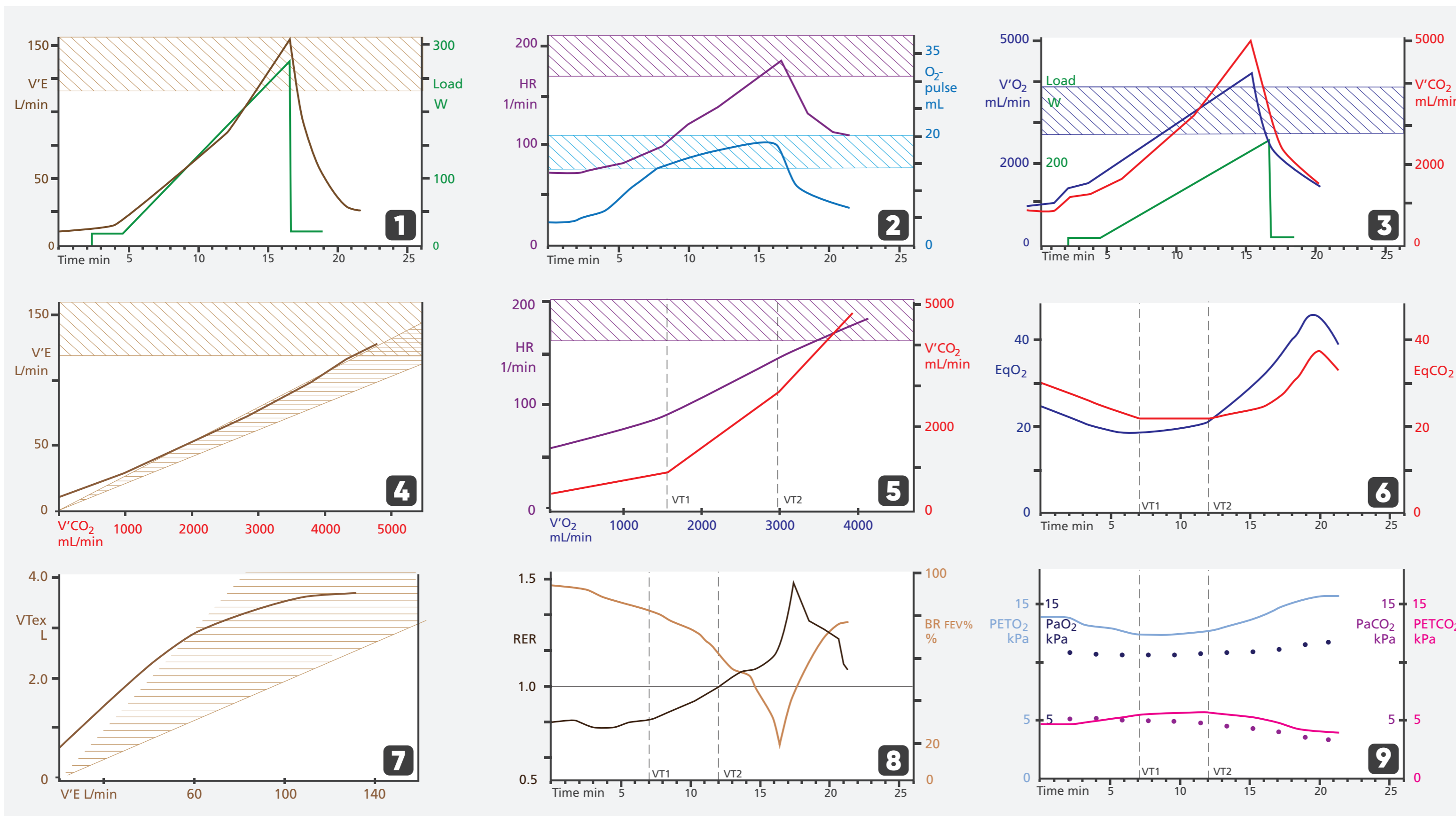
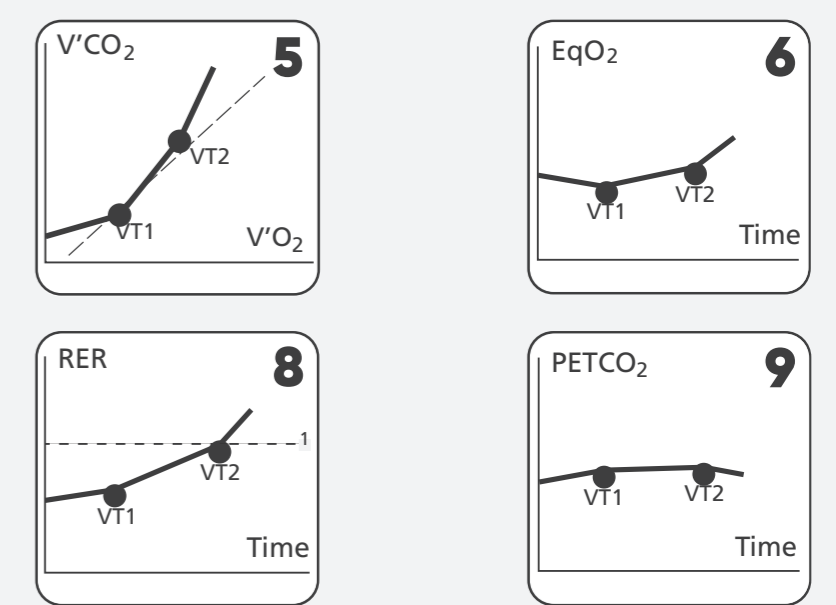


Cardiopulmonary Exercise Testing

Typical Normal CPET Curves



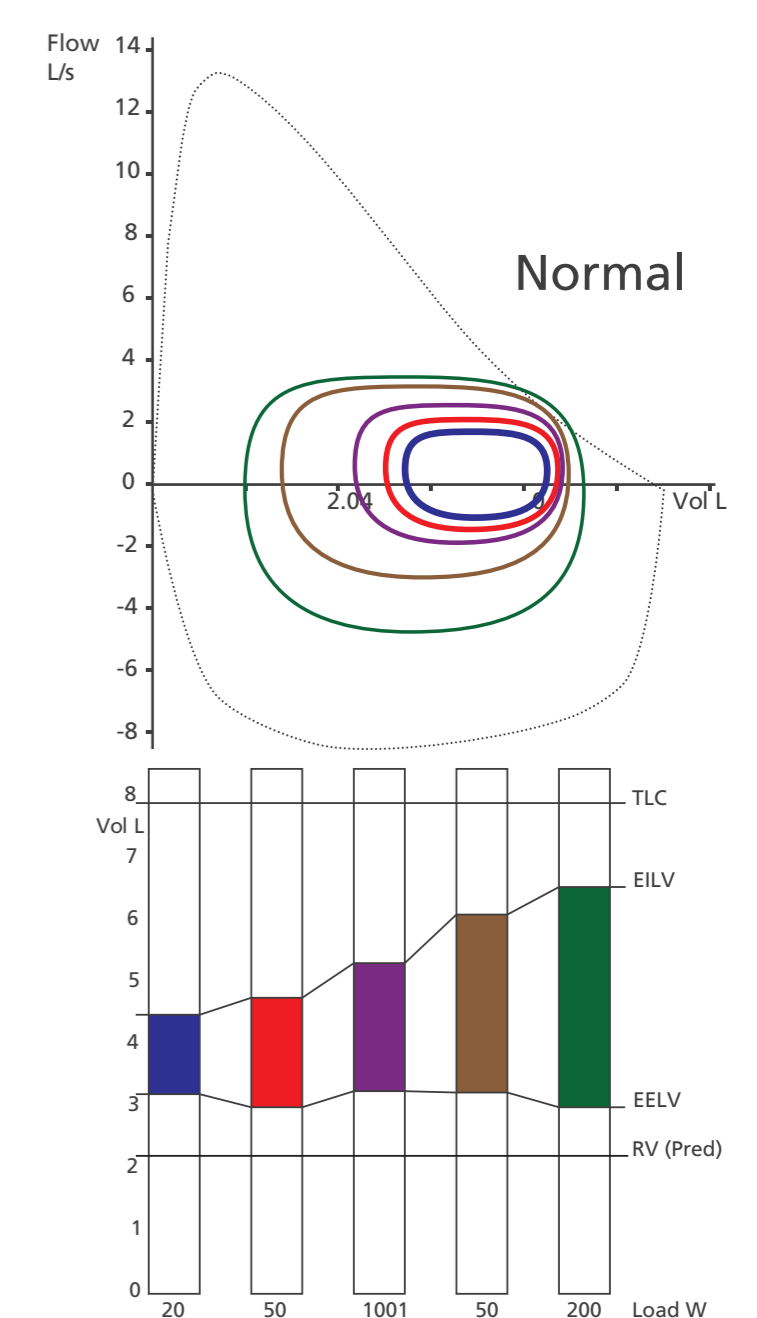
Threshold Determination



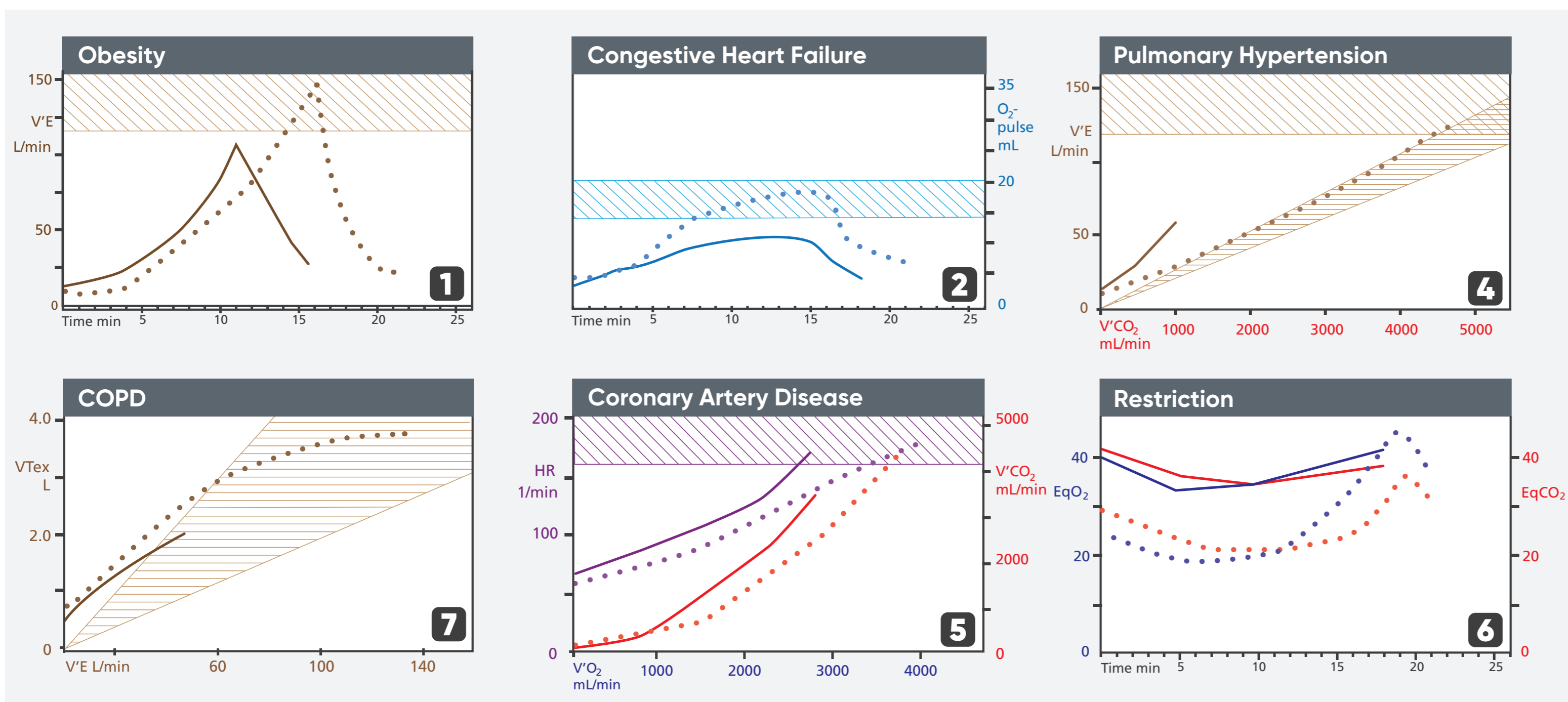
Parameter	Description
V'O ₂	Oxygen uptake
V'CO ₂	Carbon dioxide production
RER	Respiratory exchange rate
V'E	Respiratory minute volume
VT _{ex}	Tidal volume - expiratory (BTPS)
EqO ₂	Ventilatory equivalent for O ₂
EqCO ₂	Ventilatory equivalent for CO ₂
BR FEV ₁ %	Breathing reserve (FEV ₁)
HR	Heart rate
O ₂ -pulse	Oxygen pulse
Load	Workload
PETO ₂	Oxygen pressure (expiratory, end-tidal)
PETCO ₂	Carbon dioxide pressure (expiratory, end-tidal)
PaO ₂	Arterial oxygen partial pressure
PaCO ₂	Arterial carbon dioxide partial pressure
EELV	End-expiratory lung volume
TLC	Total lung capacity
VT ₁	Ventilatory threshold 1
VT ₂	Ventilatory threshold 2



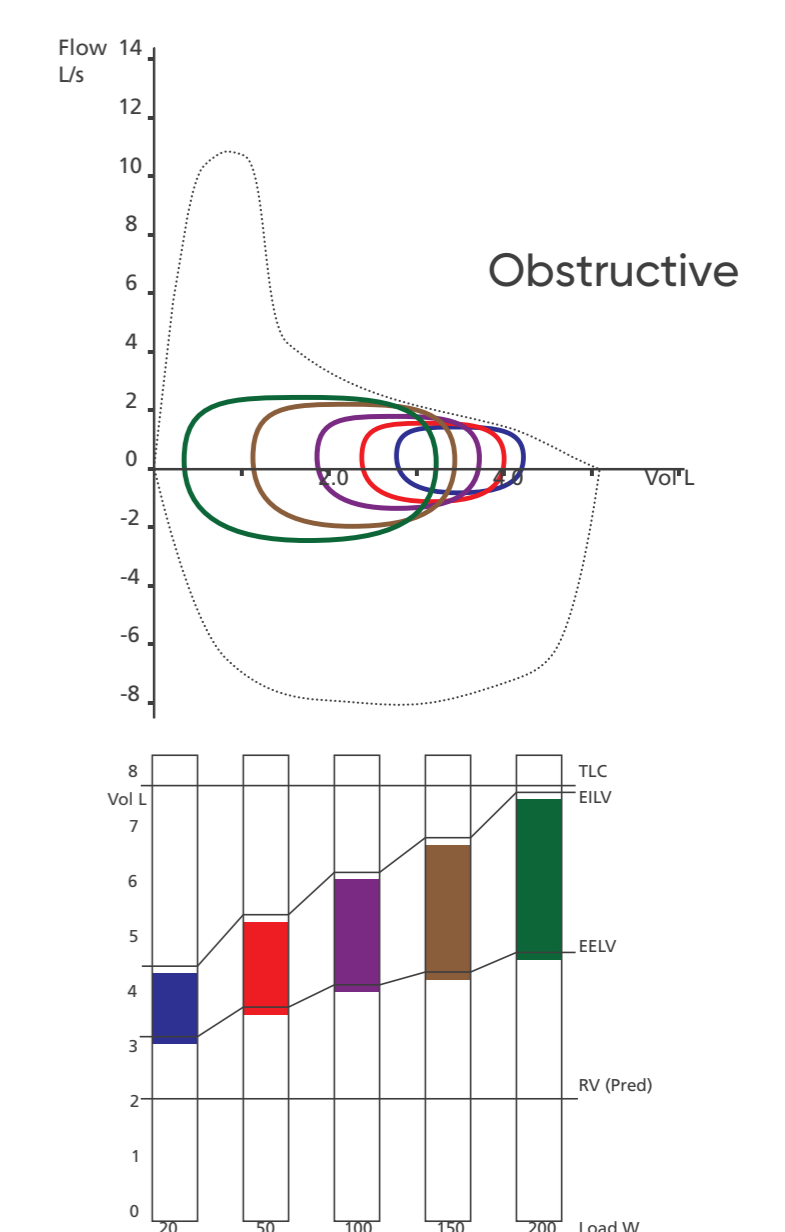
Exercise Flow Volume Loops



Typical Curves in Disease



Exercise Flow Volume Loops



These are schematic graphs, based on "Wasserman K, Hansen J.E., Sue D.Y., Casaburi R., Whipp B.J.: Principles of Exercise Testing and Interpretation, 3rd edition. (1999). Lippincott Williams & Wilkins, Philadelphia, USA. ISBN 0-683-30646-4"

The content of this poster is provided as is and does not constitute medical advice which shall be obtained exclusively by consulting with a doctor or other qualified healthcare professional. The content is not intended to be a substitute for professional medical advice, diagnostics, or treatment. All illustrations, descriptions and technical specifications are subject to change without prior notice.



© 2019 Vyair. Vyair, the Vyair Logo and Vyntus are trademarks of Vyair Medical, Inc. | VYR-INTL-1900024

CORPORATE HEADQUARTERS
Vyair Medical, Inc.
26125 N. Riverwoods Blvd.
Mettawa, IL 60045
USA

Vyair Medical GmbH
Leibnizstrasse 7
97204 Hoechberg
Germany

vyaire.com