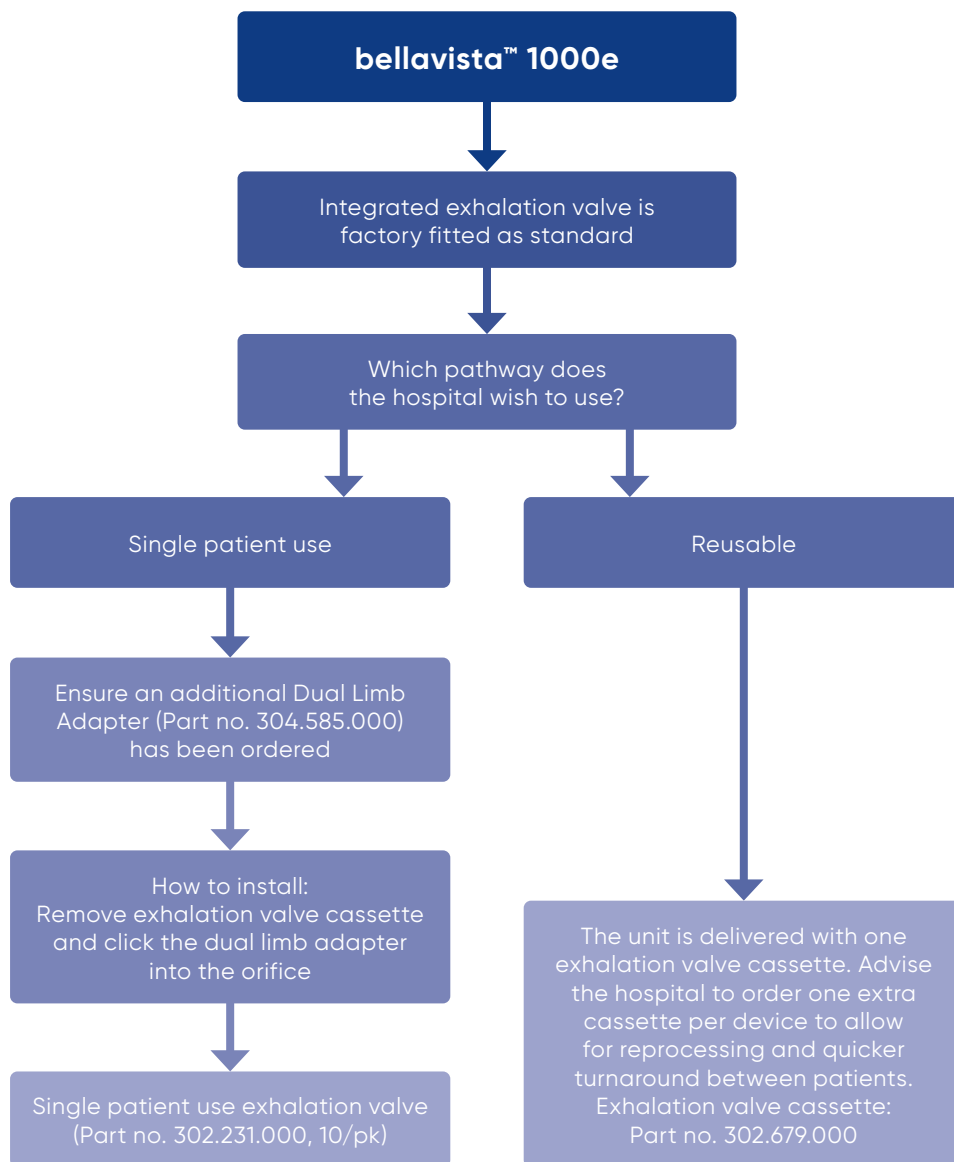
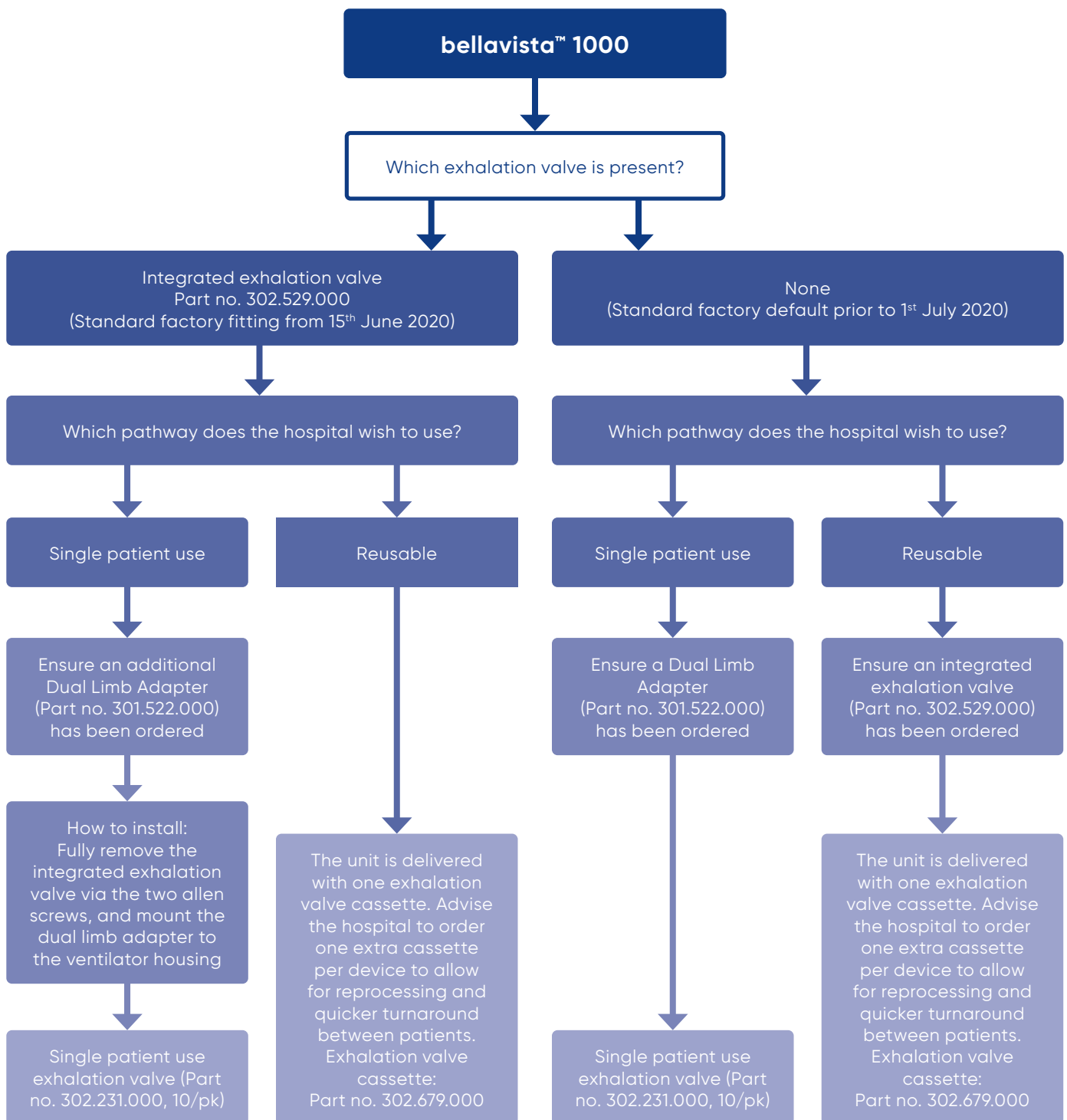


bellavista™ 1000e Exhalation Valve Decision Tree



bellavista™ 1000 Exhalation Valve Decision Tree










bellavista 1000 featuring a dual limb adapter
(Part no. 301.522.000)



bellavista 1000 / bellavista 1000e featuring
an integrated exhalation valve
(Part no. 302.529.000)

Part number	Description	
304.585.000	Dual Limb Adapter bellavista 1000e	
302.231.000	Single Patient Use Exhalation Valve (10/pk)	
302.679.000	Exhalation Valve Cassette	
302.529.000	Integrated Exhalation Valve	
301.522.000	Dual Limb Adapter bellavista 1000	



GLOBAL HEADQUARTERS

Vyairē Medical, Inc.
26125 North Riverwoods Blvd
Mettawa, IL 60045, USA



imtmedical ag
Gewerbestrassē 8
9470 Buchs (SG)
Switzerland



vyairē.com

For EU, India, South Africa, Switzerland and United Kingdom distribution only.

Trademarks are the property of their Respective owners.

© 2020 Vyairē. Vyairē, the Vyairē logo and Vyairē bellavista are trademarks or registered trademarks of Vyairē Medical, Inc., or one of its affiliates. Medical devices class IIb according to Medical Devices Directive 93/42/EEC. Please read the complete Instructions For Use that come with the devices or follow the instructions on the product labelling. VYR-INT-2000107